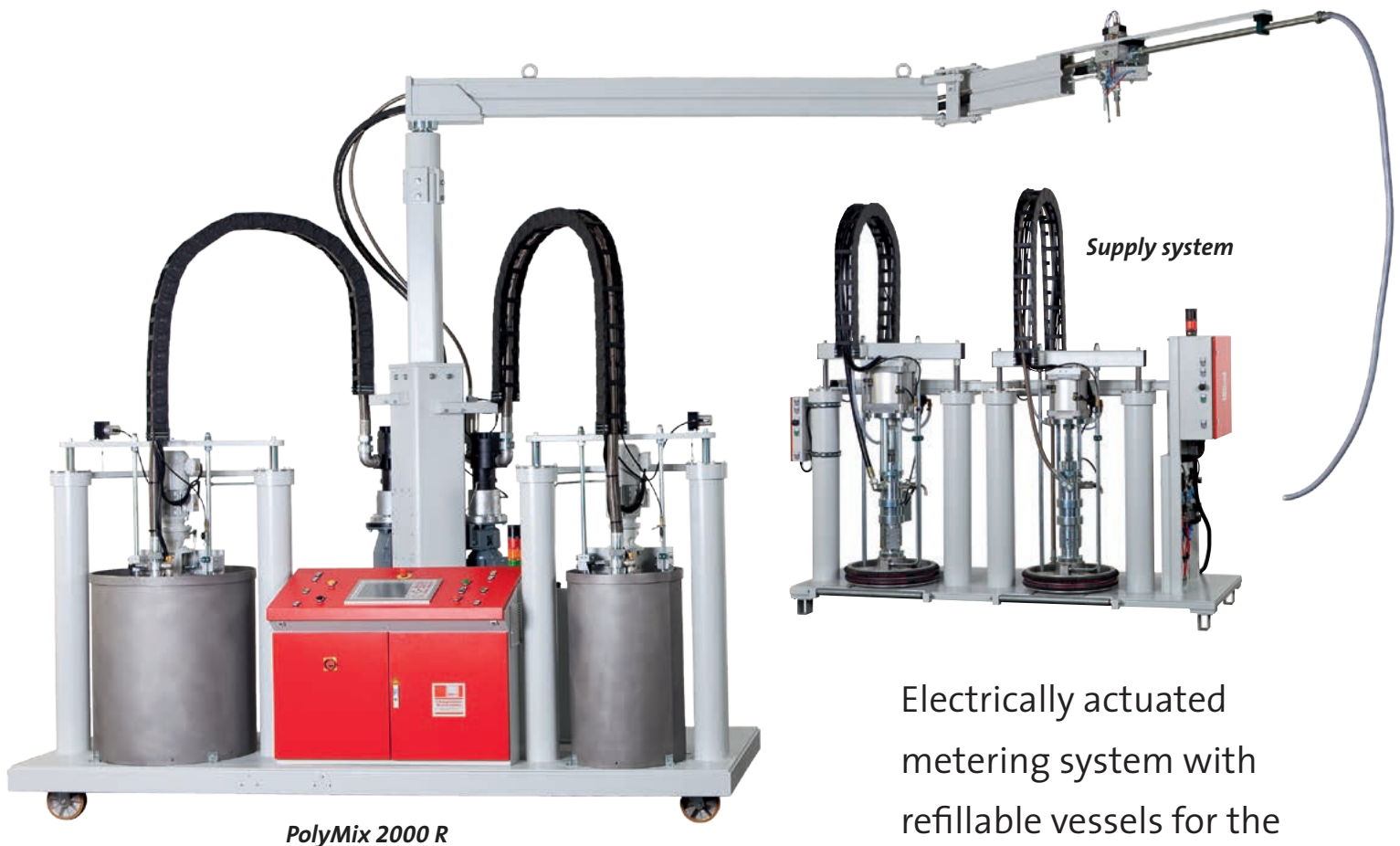
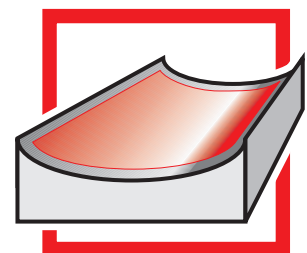




PolyMix 2000 R



Electrically actuated
metering system with
refillable vessels for the
processing of high-viscosity
epoxy resins or polyurethan





PolyMix 2000 R

Technical Data

Viscosity	appr. 100.000 mPas
Processed quantity	up to 28kg/min (depends on MR)
Mixing ratio	variable, from 20:100 over 100:100 to 100:20

Consumption / Connections

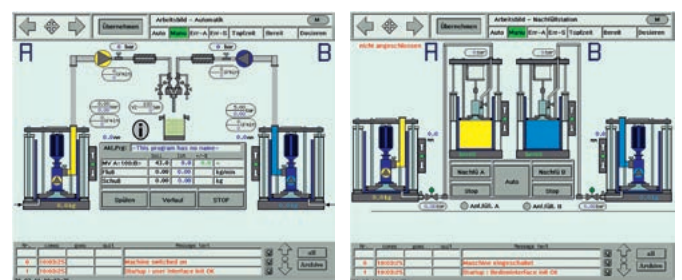
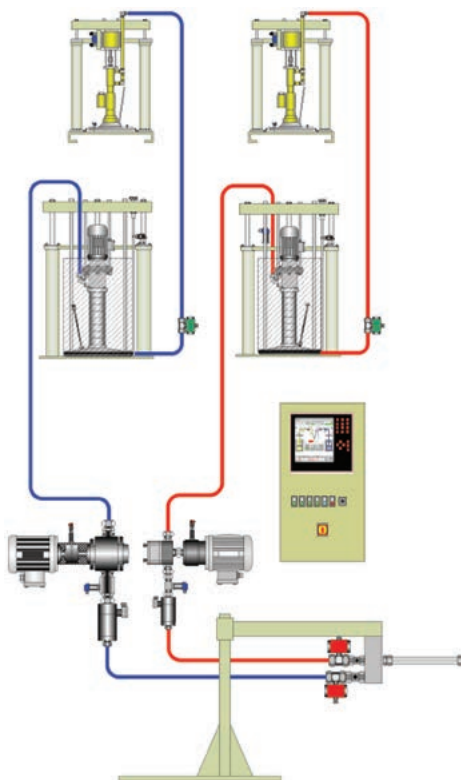
Material supply	pneumatic barrel press progressive cavity pump
Electrical data	16 kW, 400VAC, 50Hz, PE, max. 63A
Pneumatic	R1/4", 6bar (low)
Weight	appr. 2.700kg
Dimensions	(3.660 x 1.350 x 3.860)mm [LxWxH] Floor space excluding swivel arm
Working area	Height of 3.600mm



▲ back view with supply couplings, gear metering pumps, flow meters and pressure regulators for floating follower plates.

PolyMix 2000 R – Experience is everything.

Based on the four-pumps metering technology which has already successfully been applied in our PolyMix 1000 and 2000 range, this new machine is also equipped with progressive cavity pumps with a positive feed of the material to the gear metering pumps while the pressure is steadily controlled. Besides a high-precision metering also in the start and stop ramps the PolyMix series is able to process practically any adhesive material. Besides that the PolyMix 2000R is equipped with refillable vessels. This way, the usual change of barrels during glueing processes is no longer required. Leakage-free rapid couplers connect the supply system with the PolyMix 2000 R unit. Thanks to the available level control it is possible to check whether the amount of adhesive is sufficient to finish off a current blade adhesion job.



▲ user display of 12"-touchpanel