

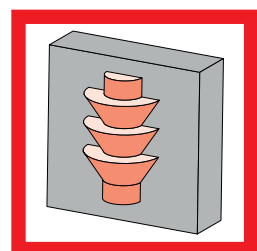


SilcoStar e-Flow



With new 2KM pressure control technology of mixed materials

Servo-electric driven metering system with variable mixing ratio



SilcoStar e-Flow

Electro servo drives

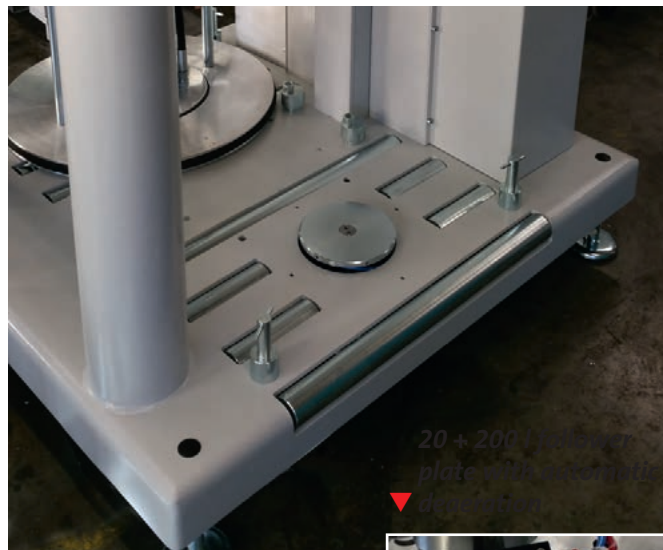
- Electro servo drives
- Servo electric driven linear drive with fixing brake and planetary roller screw actuator
- Calculated life time of 10 years (at max. pressure of 200 bar and a max. consumption of 49 tons per year)

Optimized Barrel Emptying

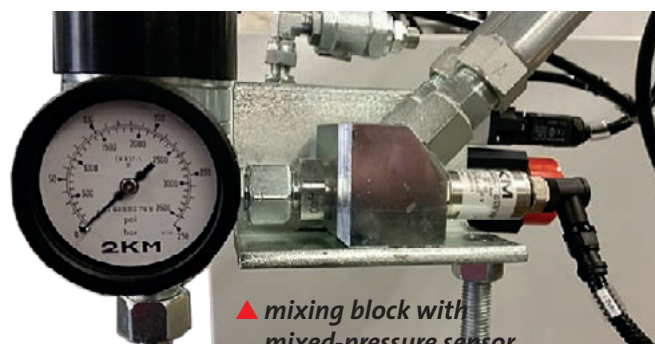
Thanks to the combination of two completely new developed systems the residual quantity in the 200 l barrel can easily and comfortably be reduced to a minimum. The required follower plate deaeration in case of change of barrel is effected automatically (optional) and reduced to a minimum quantity thanks to a new technology. The barrel floor support avoids dents in the baseboard. Different filling quantities of the A and B component may be balanced out by using of gravimetric adjustment. This technology helps to reduce the residual amount in the empty drum to < 1 %.

Basic Equipment

- Integrated roll-in device with automatic barrel bottom support
- Filling level control
- PLC (Beckhoff) with display operation
- 200 l follower plate (optimization of residual quantity)
- Pressure sensors for lack of material and overpressure
- Standard machine connection (mixer block, outlet valve and static mixer)
- Adjustable mounting foot for easy placement of the machine
- Varnishing in standard paint (RAL 7035 and RAL 9003)



▲ *integrated roll-in-device with automatic barrel bottom support*



▲ *mixing block with mixed-pressure sensor*



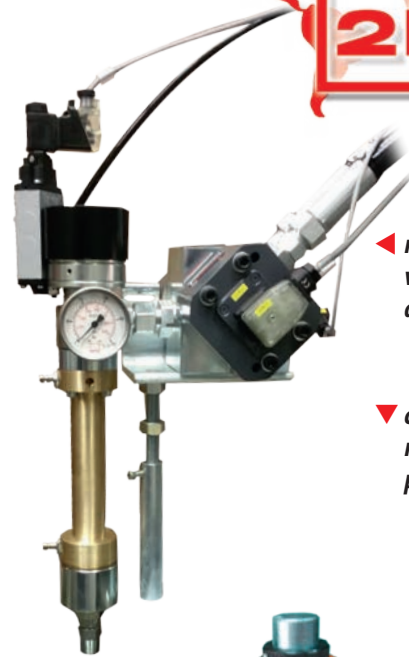
▲ *autom. pump deaeration with collection*

Metering & Mixing Systems



Options

- Automatic follower plate deaeration
- 20 l follower plates
- Metering control of A and B component
- Colour metering 0.3 – 4% with metering valve and position indicator
- Colour feeding 0.7 l pressure vessel, 10 l colour feeding pump, 20 l colour feeding pump with optional agitator
- Cooled static mixer
- Colour shortage control by means of pressure sensors
- Varnishing in special paint



◀ *metering control with flow meters and cooled static mixer*

▼ *colour metering with metering valve and position indicator*



◀ *10 l colour supply pump*

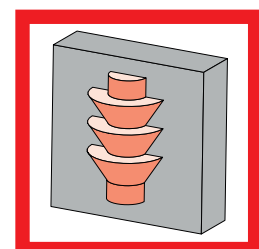


▲ *movable 20 l colour supply pump with agitator*

drum handling ▶



▲ *10" TFT-Touch-Screen operator panel*





SilcoStar e-Flow

Technical Data

Viscosity	1,000,000 mPas
Output mixed material	400g/min (depending on viscosity)
Mixing ratio	1:1 (variable)
Colour metering	0.3 – 4%

Consumption / Connections

Actuation	servo electric
Electrical data	6kVAC / 400V 50Hz max. 16A
Connection LIM machine	24V
Pneumatic system	R1/4", 6bar low
Weight	730kg
Dimension	1.030 x 1.112 x 1.950 mm [W x D x H] <i>(Attention: height + 950mm if pump completely lifted!)</i>

Advantages

- Potential capacity savings through totally and constant emptying of the supply vessels
- Integrated roll-in device with automatic barrel bottom support
- 2-sides operation
- Marginal space required
- Low energy consumption

Possible annual savings in a 3-shift operation

Shot weight 12 g, barrel change: once in 7 days

Savings: approx. 8,300.00 €/a

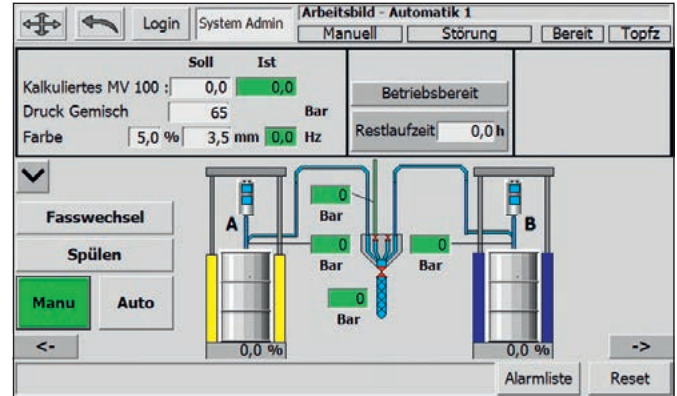
Shot weight 5 g, barrel change: once in 4 days

Savings: approx. 18,200.00 €/a

Shot weight 50 g, barrel change: once in 2 days

Savings: approx. 32,850.00 €/a

(calculation may vary due to cost of material)



▲ schematic and operator display

