



2 KOMPONENTEN MASCHINENBAU METERING AND MIXING SYSTEMS



SilcoStar *e-flow*

Servo-electric driven Metering System with variable mixing ratio



Electro servo drives

- Electro servo drives
- Servo electric driven linear drive with fixing brake and planetary roller screw actuator
- Calculated life time of 10 years (at max. pressure of 200 bar and a max. consumption of 49 tons per year)

Optimized Barrel Emptying

Gratitude to the combination of two completely new developed systems the residual quantity in the 200 l barrel can easily and comfortably be reduced to a minimum. The required follower plate deaeration in case of change of barrel is effected automatically (optional) and reduced to a minimum quantity gratitude to a new technology. The barrel floor support avoids dents in the baseboard.

Different filling quantities of the A and B component may be balanced out by using of gravimetric adjustment.

This technology helps to reduce the residual amount in the empty drum to < 1 %.

Possible annual savings in a 3-shift-Operation

Shot Weight 12 g, Barrel change: once in 7 days

Savings: approx. 8,300.00 €/a

Shot Weight 5 g, Barrel change: once in 4 days

Savings: approx. 18,200.00 €/a

Shot Weight 50 g, Barrel change: once in 2 days

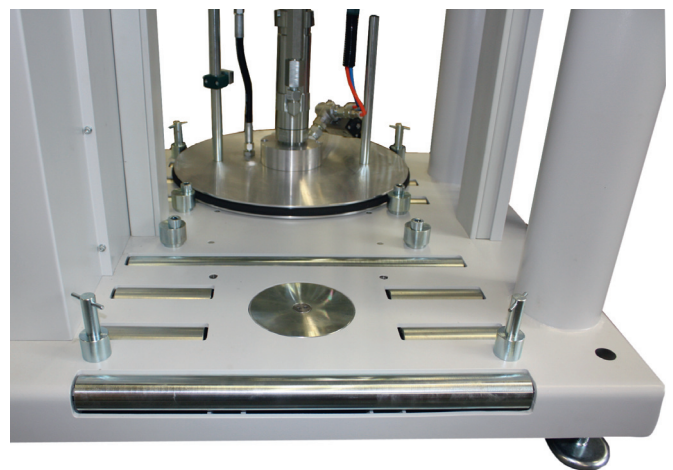
Savings: approx. 32,850.00 €/a

Advantages

- Potential capacity savings through totally, equal complete and constant emptying of the delivery vessels
- Integrated roll-in device with automatic barrel bottom support
- 2-sides operation
- Marginal space required
- Low energy consumption

Basic Equipment:

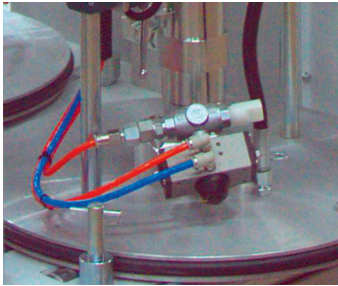
- Integrated roll-in device with automatic barrel bottom support
- Filling level control
- PLC (Beckhoff) with display operation
- 200 l follower plate (optimization of residual quantity)
- Pressure sensors for lack of material and overpressure
- Standard machine connection (mixer block, outlet valve and static mixer)
- Adjustable mounting foot for easy placement of the machine
- Varnishing in standard paint (RAL 7035 and RAL 9003)



Integrated roll-in device with automatic barrel bottom support

Options

- Automatic follower plate deaeration
- 20 l follower plates
- Metering control of A and B component
- Colour metering 0.3 – 4% with metering valve and position indicator
- Colour feeding 0.7 l pressure vessel, 10 l colour feeding pump, 20 l colour feeding pump with optional agitator
- Cooled static mixer
- Reciprocal feeding of two LIM units
- Colour shortage control by means of pressure sensors
- Varnishing in special paint



Automatic follower plate deaeration (200 l)



colour metering with metering valve and position indicator



Adjustable machine feet



Cupholder for air venting



connection with cooled static mixer, colour metering valve and pressure sensor



Moveable 20 l colour supply pump with agitator

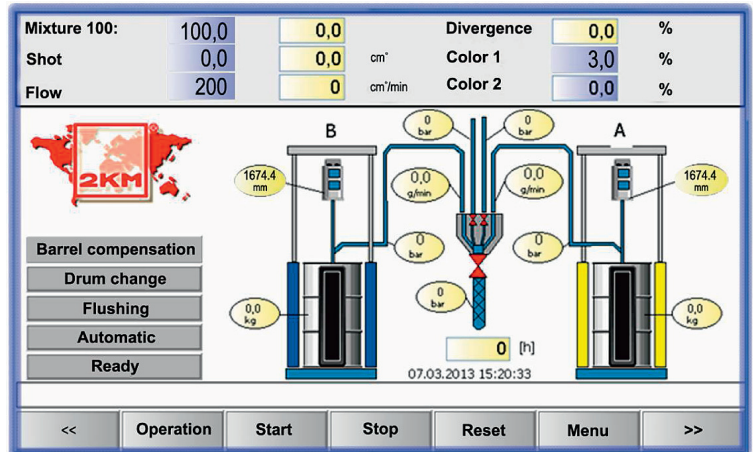


10 l feeding pump for colour with empty control indicator



TECHNICAL DATA

Viscosity	1.000.000 mPas
Output mixed material:	800g/min (depending on viscosity)
Mixing ratio:	1:1 (variable)
Colour metering:	0,3 – 4%
Consumption / Connections	
Actuation:	servo electric
Electrical Data:	6kVAC / 400V 50Hz max. 16A
Connection LIM-Machine:	24V
Pneumatic System:	R1/4", 6bar low
Weight:	730kg
Dimension:	(1 .030 x 1.112 x 1.950) m [W x D x H]



(Attention: Height + 950mm if pump completely lifted!)

Silicone metering machines:

2KM Group



SilcoStar 923

PFM 6000

SilcoStar 930P

SilcoStar 1950

SilcoStar e-flow

P F M rocess flow ix **medical**

SilcoStar PCM LSR

SilcoStar 922 HighFlow

SilcoStar 950H

PFM Servo LSR